

# MOVING TECHNOLOGIES



## MAXIPARTNER<sup>®</sup> - MX

COLUMN MXC



FIXED OVERHEAD MXF



OVERHEAD TROLLEY MOUNTED MXS

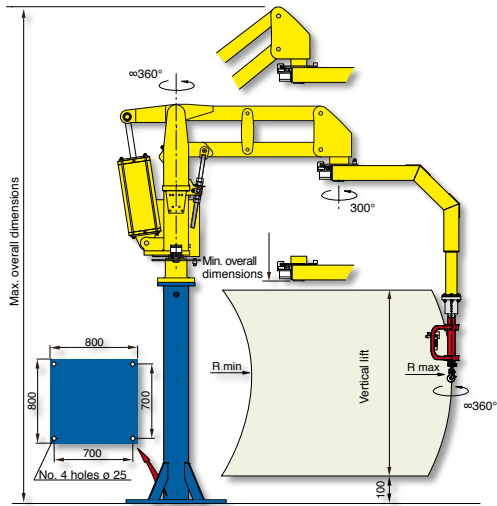


 **dalmec**  
Industrial Manipulators

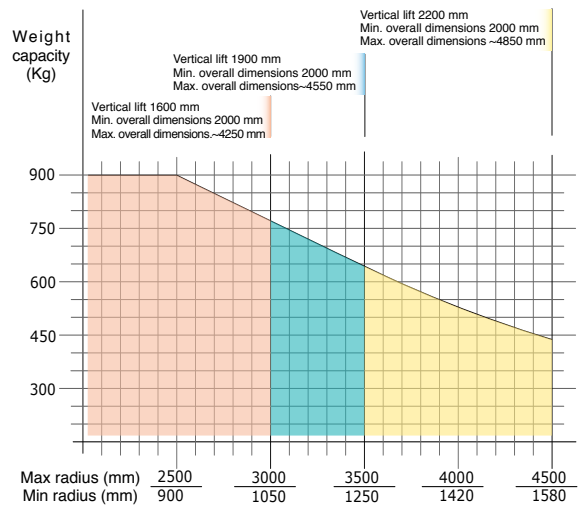
**Pneumatic Manipulator MAXIPARTNER MX with articulated arms**

MAXIPARTNER MAX, designed and realized particularly for difficult handlings, meets the requirement to move heavy and off-set loads, in any direction, allowing the operator to work with the minimum effort in good ergonomic and safety conditions. Its slim and strong structure eliminates the "drifting" effect.

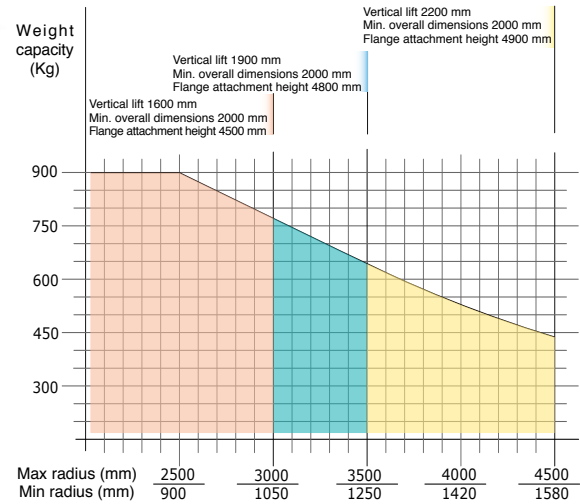
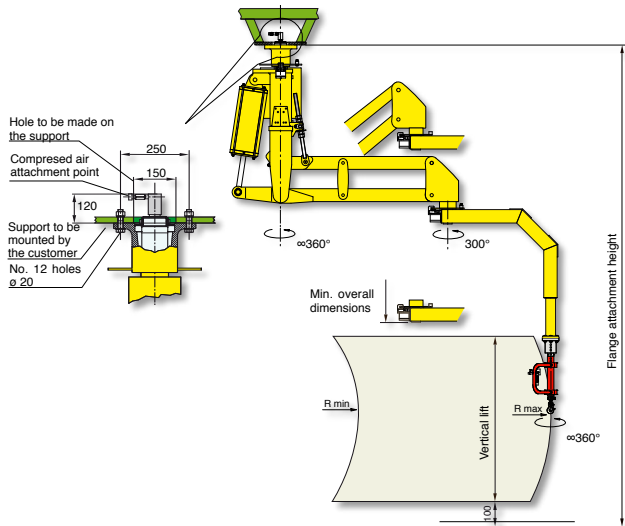
## Maxipartner column mounted - MXC



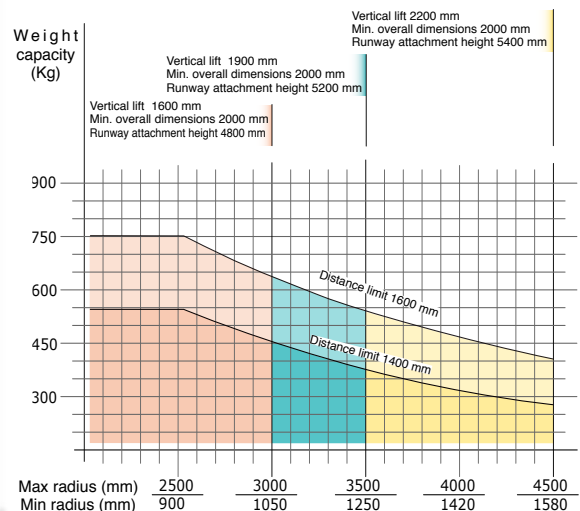
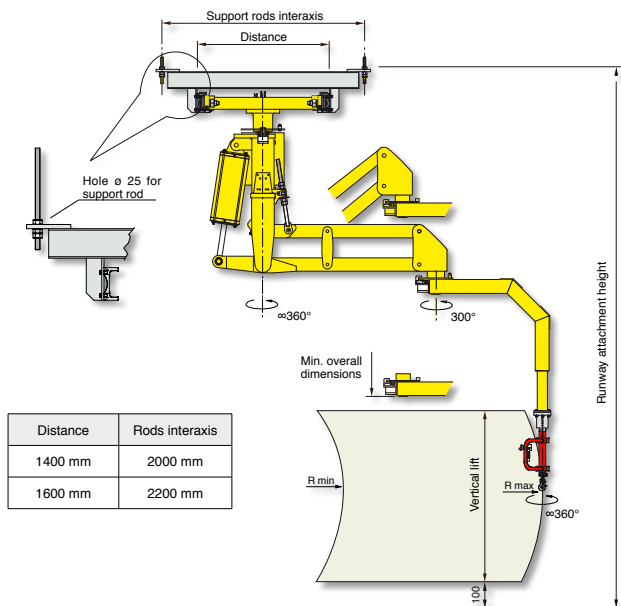
Structural versions: column mounted on fixed base-plate, autostable base-plate of our supply properly dimensioned or with autostable motorised trolley that translates on a simple profile track on the floor.



## Maxipartner overhead mounted - MXF



## Maxipartner overhead trolley mounted - MXS



Air supply: Dry and oil-free compressed air min constant 0.7÷0.8 MPa